

IOCCP No. *688* / *03.07.2019*

## Protocol of analysis

**Applicant:** Dragonfly Biosciences Bulgaria

**Subject of the test:** Determination of CBD content in the examples provided

**Product name:** P.C.Oil CBD 5,6% N.S.

**Batch number:** 0207

CANNABINOIDS %		
CBDA	CBD	CBN
-	6.3202 %	-
THCA and THC are not detectable		

Method of analysis in accordance with recommended practice of



High Performance Liquid Chromatography (HPLC) analysis carried out strictly following the "Recommended methods for the identification and analysis of cannabis and cannabis products" by United Nations Office on Drug and Crime.

Method used: HPLC, column LiChrospher 60 RP-select B, 250x4mm (5 µm); pre-column 4x4mm RP-select B (5 µm).

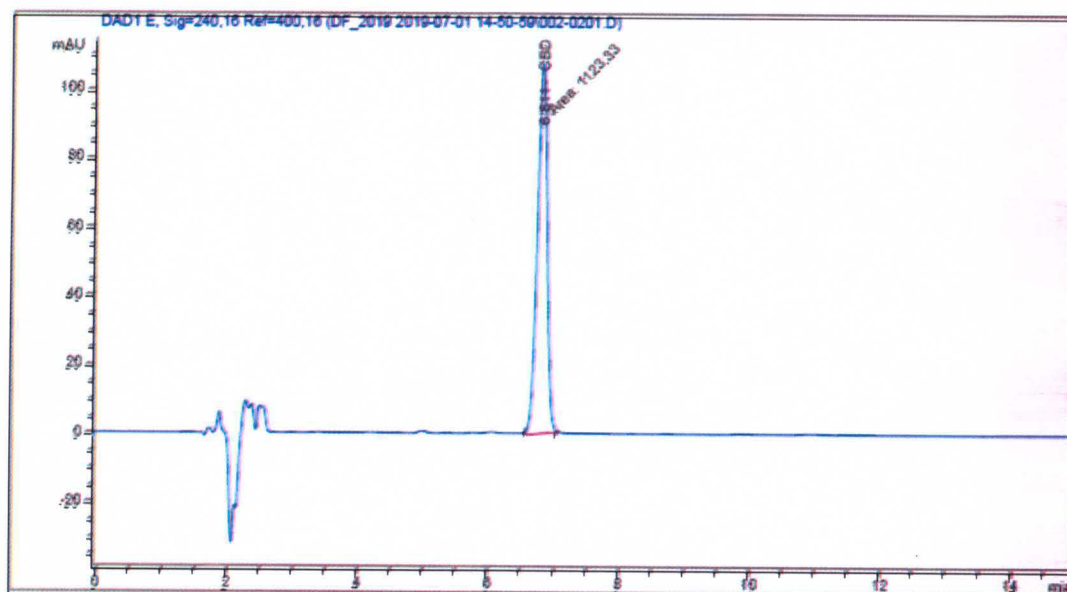
Chromatograms and other data

Data File C:\CHEM92\1\DATA\DF\_2019\_2019-07-01\_14-50-59\002-0201.D  
Sample Name: 0207

```

=====
Acq. Operator   : YN                               Seq. Line : 2
Acq. Instrument : HPLC1                           Location  : Vial 2
Injection Date  : 01.7.2019 p. 15:27:41           Inj       : 1
                                                    Inj Volume: 20 µl
Acq. Method    : C:\CHEM92\1\DATA\DF_2019_2019-07-01_14-50-59\DF_2019.M
Last changed   : 14.6.2019 p. 19:19:49 by YN
Analysis Method: C:\CHEM92\1\METHODS\DF_2019.M
Last changed   : 14.6.2019 p. 19:19:49 by YN
Method Info    : This is a test method
=====

```



External Standard Report

```

=====
Sorted By      : Signal
Calib. Data Modified : 10.1.2019 p. 10:56:45
Multiplier:    : 1.0000
Dilution:      : 1.0000
Use Multiplier & Dilution Factor with ISTDs
=====

```

Signal 1: DAD1 E, Sig=240,16 Ref=400,16

RetTime (min)	Type	Area (mAU*s)	Amt/Area	Amount (mg/ml)	Grp	Name
6.000		=	=	=		CBDA
6.911	MM	1123.92727	6.29026e-5	7.06602e-2		CBP
9.919		=	=	=		CBN

Totals : 7.06602e-2

Operator:

*Krasimira Dikova*  
(Asst. Prof. Krasimira Dikova)

Responsible scientist:

*Vladimir Dimitrov*  
(Prof. DSc. Vladimir Dimitrov)

/ Director of the Institute

*Svetlana Simova*  
(Prof. DSc. Svetlana Simova)

